

ORIGIN



**SAVING
THE WILD**

A PROCEED FROM EACH RHINO SOLD
WILL GO TO SAVING THE WILD.



PROUDLY NEW ZEALAND OWNED

Great Lake Motor Distributors and all our SsangYong
dealers are 100% NZ owned and operated.



R H I N O



 SSANGYONG





GET ON THE ROAD TO YOUR NEXT ADVENTURE

The new RHINO is here with a style that is bolder and more dynamic than ever. Eye-catching and confident, the new RHINO maximizes adventure both on and off-road.

Evolving with the times, the new Rhino is a genuine pickup truck that combines advanced technologies with all the practical features of a traditional pickup.

The new Rhino: unrivalled presence and a thoroughly practical style.

STUNNING DESIGN AGGRESSIVELY DYNAMIC

With its bold style and sculptured body lines, the new Rhino offers the ideal proportions of a traditional pickup, while projecting a powerful, eye-catching presence.

It excels off-road and is equally at home in the city: It is the perfect partner for work or play.

High-intensity-discharge headlamps for better night vision; LED daytime running lights (SPR only), positioning lamps and directional indicators grouped in the upper lamp housing for simplicity



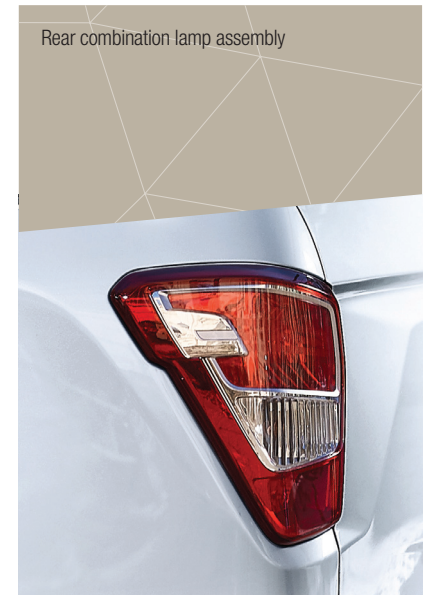
Shoulder-wing design of radiator grille for greater depth and a dynamic feel

All new design for the foglights (SPR only)









EXPRESSIVE AND DOMINANT ON EVERY ROAD

The rear is identified by the signature shoulder-wing line and wrap-around tail-lamp assembly. The black rear bumper matches front for balance. Reflex reflectors provide added visibility to vehicle for safety.

The bed is coated with an inner cover for protection, while a foldable tie-down ring is placed at each corner of the truck bed to secure cargo. In addition, an outlet is mounted near the reinforced tailgate to provide electrical power for tools and other devices.

SOPHISTICATED AND MORE SPACIOUS THAN EVER.

Step inside the luxurious cabin of the new Rhino and you will be impressed by the range of comfort and convenience features.

The use of premium materials throughout the cabin reinforces the luxurious image while the comprehensive range of standard specification features demonstrate careful consideration for occupant needs. While Rhino's exterior projects visual dynamism, the cabin is all about serene luxury.

Sleek and clean, the cabin has that wide open feeling and optimizes comfort throughout.



APPLE CARPLAY AND ANDROID AUTO

Users may connect their smart phone to the display to make phone calls, check messages and listen to music while on the road.





Rhino SPR interior shown

PREMIUM INTERIOR

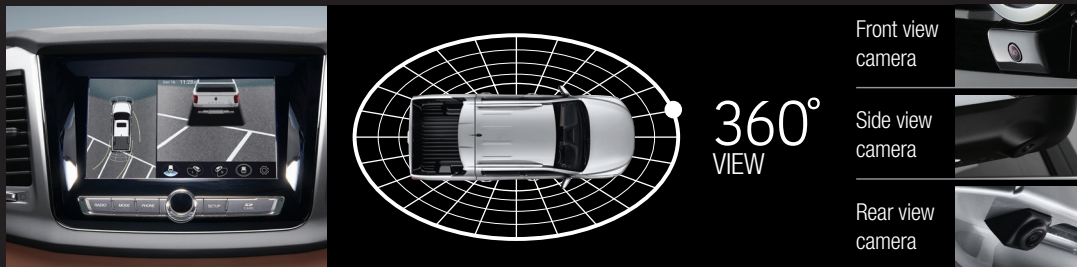
Driving the Rhino is fun and easy. The tilt steering wheel adjusts easily. Remote control and cruise control switches are mounted on the steering wheel for instant access.

Step inside the luxurious cabin of the new Rhino and you will be impressed by the range of comfort and convenience features.

THE LATEST INFOTAINMENT

The infotainment system comes with a high-definition touchscreen (SPR and Sport only), which supports Apple CarPlay and Google Android Auto. System features also include radio and MP3 player functions, real-time broadcast recording, and USB port.

360° MONITORING SYSTEM (SPR only)





SUPER-VISION CLUSTER (SPR only)



TRIPLE-MODE DIGITAL SPEEDOMETER DISPLAY



Regular mode



Animation mode



RPM-linked mode

TRIP COMPUTER DISPLAY



Turn signal sound selection



Tyre direction indicator



SMOOTH SHIFTING AND POWERFUL PERFORMANCE OPTIONS

Experience the thrill of a lifetime with the new Rhino. The four-wheel drive (4x4) system ensures optimal distribution of drive power to the front and rear wheels according to road and driving conditions, ensuring maximum traction and safety.

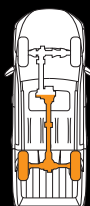
You can count on Rhino & Rhino XL to deliver powerful, highly responsive performance with the 420Nm 2.2 Diesel engine. The Rhino Diesel model can tow loads of up to 3.5 tons, one of the highest for this class of ute.

AISIN 6-SPEED AUTO TRANSMISSION

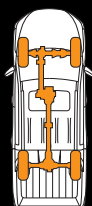
A high ratio spread optimises shift quality under diverse road conditions. Control of changes in speed is solid, enabling the automatic transmission to maintain a smooth shifting feel. The Manual mode (shifting up or down) delivers rapid responsiveness for a more dynamic driving performance.

PART-TIME 4WD

Part-time four-wheel drive allows the driver to choose when to activate the system, depending upon changing conditions on or off the road.



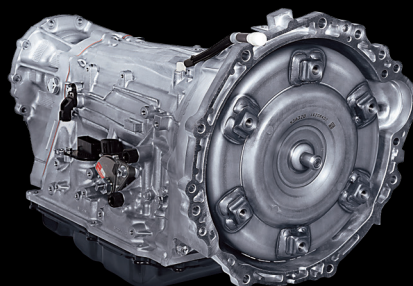
2WD
High-speed
range



4WD
Low-speed
range



4WD
High-speed
range



» e-XDi 220 diesel engine (Euro 6-compliant)



Max. Power
(kW / rpm)

133 @ 4,000

Max. Torque
(Nm / rpm)

Diesel Auto **420** @ 1,400~2,800

Displacement
(CC)

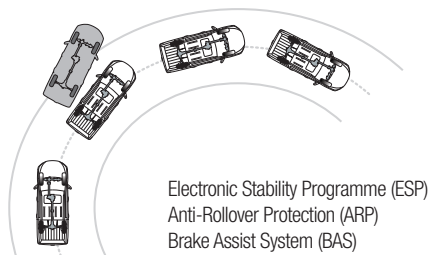
2,157



A COMMANDING PRESENCE OVER ALL TYPES OF TERRAIN

The Rhino comes equipped with six airbags, including curtain airbags. The electronic stability programme (ESP) monitors road conditions and vehicular status constantly, adjusting engine output and braking whenever the driver is about to lose control.

ESP Electronic Stability Programme



Emergency Stop Signal (ESS)



Hill Start Assist (HSA)



Hill Descent Control (HDC)



6 AIRBAGS

- 1 Driver's airbag
- 2 Passenger's airbag
- 3, 4 Driver's & passenger's side airbags (SPR only)
- 5, 6 Curtain airbags (SPR only)





SOLID FUNDAMENTALS

The new-concept Quad Frame helps to keep road surface and engine noise out of the cabin.

At the same time, it is designed to minimise the possibility of injury to occupants in a collision.

QUIETER INSIDE

The rubber engine mounts have been enlarged to reduce engine noise and vibration while idling or travelling.

Quadruple-layered seals are on the top and bottom of the doors and around the windows to block out road and wind noise.



Leaf-spring rear suspension (Rhino XL only)

Thanks to superb cargo-towing capacity, the Musso Grand continues to ride smoothly and handle wonderfully even when heavy loads are brought along.

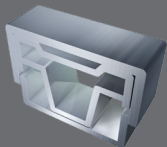
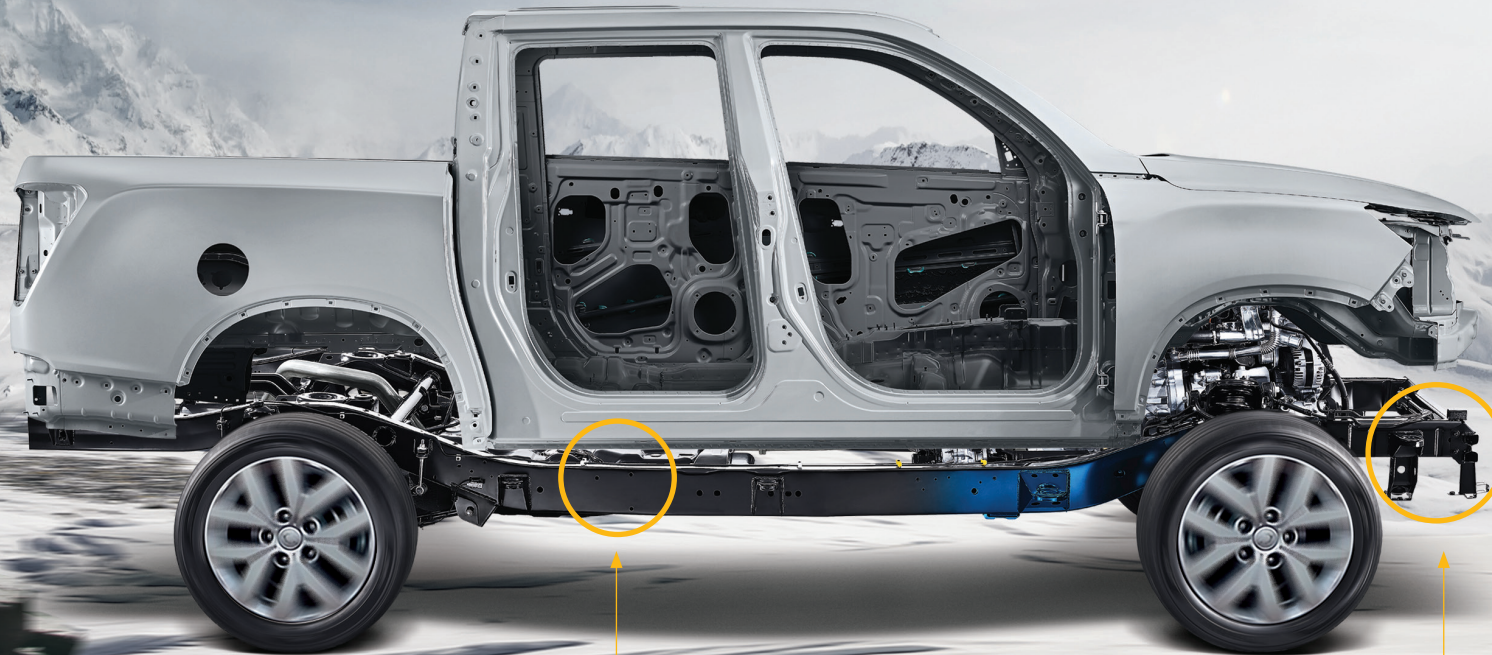


FIVE-LINK REAR SUSPENSION

The axle is connected on the left and right to provide a smooth ride even when the road surface gets rough. Such a system is preferred for off-road operation.

ADVANCED AUTOMOTIVE HIGH-STRENGTH STEEL

High-density, high-tensile-strength steel plate makes up 79.2% of all the steel plate used in the body-chassis, providing superb rigidity and protection against deformation in a collision. Thus, protection of the vehicular occupants has been maximised.

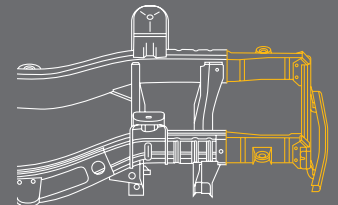


QUAD FRAME

Unlike with a monocoque structure, the engine and suspension systems are attached directly to the frame, blocking the heavy shock experienced when traveling over rough road surfaces or speed bumps and ensuring maximum handling stability.

CRASH ZONE BOX

The 'crash zone' refers to that part of frame that conveys the most shock from a frontal collision to the inside of the cabin. This 'box' is designed to absorb that force, thereby protecting the people inside.





SAVING THE WILD

Founder of Saving the Wild, Jamie Joseph is a young woman on a critical mission – to save her beloved African rhinos. With rhino horn worth more than diamonds or cocaine gram for gram, rhino poaching is lucrative and trying to stop it, seriously dangerous. Since the start of 2016 she has been exposing a notorious rhino poaching syndicate led by the accused rhino poaching kingpin of Zululand, Dumisani Gwala.

In October 2017 she exposed the 'Blood Rhino Blacklist', a syndicate of corrupt magistrates and prosecutors protecting not only rhino poachers and kingpins, but murderers and rapists too.

In this war on greed, Jamie Joseph continues to fight for that which is priceless.

A proceed from every SsangYong Rhino sold will go to help Jamie Joseph and her crusade to help save the Rhino in the wild.

STYLE & CONVENIENCE



Cluster with 3.5" trip computer



Safety powered window



Tilt steering wheel system



Reinforced tailgate



8" smart audio (SPR and Sport only)



Remote control switches and cruise control system on the steering wheel



Dual-zone fully automatic air-conditioner (SPR only)



Manual air-conditioner



Headlamp control and automatic washer switches



Front fog lamps

STYLE & CONVENIENCE



Sunvisor



Overhead console



USB port and power outlet



Door step lamps



Door map pocket



2nd row cup-holder



Glovebox and centre console box



Deck hook



Deck power outlet



Assist grips on the B pillar



Dual smart key

COLOUR GUIDE

WHEELS



17" Alloy Wheels

DECK SIZE



Rhino



Rhino XL

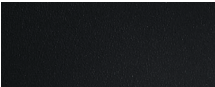
INTERIOR COLOUR



Black seats with black headlining



Nappa leather (SPR)



Leatherette (Sport)

EXTERIOR COLOUR



Grand White (WAA)



Marble Gray (ACM)



Space Black (LAK)



Indian Red (RAJ)



Atlantic Blue (BAU)

FEATURES LIST

	Sport Diesel 4WD Auto	SPR Diesel 4WD Auto	Sport Diesel XL 4WD Auto	SPR Diesel XL 4WD Auto		Sport Diesel 4WD Auto	SPR Diesel 4WD Auto	Sport Diesel XL 4WD Auto	SPR Diesel XL 4WD Auto		Sport Diesel 4WD Auto	SPR Diesel 4WD Auto	Sport Diesel XL 4WD Auto	SPR Diesel XL 4WD Auto
MECHANICAL					APPEARANCE					CONVENIENCE				
2.2L e-XDi Diesel engine (133kW)	•	•	•	•	17" Alloy Wheels	•	•	•	•	Cruise control system	•	•	•	•
Part-time 4WD	•	•	•	•	Full-sized spare tyre	•	•	•	•	Supervision Cluster				•
6-speed automatic transmission	•	•	•	•	Integrated Projection Headlamps		•		•	Standard Cluster	•		•	
Double-wishbone front suspension system with coil springs	•	•	•	•	25W HID headlamps	•		•		Luxurious leather knob for gear shift lever	•	•	•	•
Five-link rear suspension with coil springs	•	•			Exterior door handles in body colour	•	•	•	•	Floor mats	•	•	•	•
Leaf Spring rear suspension			•	•	Clean door sills	•	•	•	•	Dual remote key system	•	•	•	•
Hydraulic power steering	•	•	•	•	Pole antenna	•	•	•	•	2-Din MP3 audio system				
SAFETY					Exterior door mirrors in body colour with LED side repeaters	•	•	•	•	USB & Aux. port	•	•	•	•
Ultra-rigid frame for greater strength, less vibration and noise	•	•	•	•	Rubber blade wiper	•	•	•	•	8 inch Media Centre with Reverse Camera	•	•	•	•
Door impact beams for optimal protection from side collisions	•	•	•	•	Front Fog Lamps	•	•	•	•	Apple Carplay and Android Auto	•	•	•	•
Electronic Stability Control ESP, Traction Control TCS, Hill Descent Control HDC, Active Roll-Over Protection ARP	•	•	•	•	Daytime Running Lights		•		•	6 speakers	•	•	•	•
Dual Airbags for driver and front passenger	•	•	•	•	CLIMATE CONTROL					360° Monitoring System		•		•
Side Airbags for driver and front passenger	•	•	•	•	Front dual-zone auto air conditioning system		•		•	Bluetooth hands-free	•	•	•	•
Curtain Airbags for driver and front passenger	•	•	•	•	Manual air conditioning	•		•		Audio remote control switch on steering wheel	•	•	•	•
Seatbelt load limiters and pre-tensioners	•	•	•	•	Rear heating duct	•	•	•	•	Heated and adjustable outside mirrors		•		•
4-channel anti-lock braking system	•	•	•	•	SEATS					Trip computer	•	•	•	•
Door courtesy lamps		•		•	8-way power adjustable driver's seat		•		•	Bed inner cover	•	•	•	•
Immobilizer system	•	•	•	•	6-way power adjustable passenger's seat		•		•	Spray washer nozzle	•	•	•	•
Speed sensitive door lock	•	•	•	•	Heated front seats		•		•	Deluxe overhead console in easy reach	•	•	•	•
ISO-FIX and tether anchorage for baby car seat	•	•	•	•	Ventilated Front Seats		•		•	Handy centre storage console	•	•	•	•
Seatbelt reminder for driver	•	•	•	•	2nd row seats with folding centre armrest	•	•	•	•	Cup and stationary holder in the console	•	•	•	•
					Front sliding headrest	•	•	•	•	Sun-visors with vanity mirror and illumination	•	•	•	•
					Height adjustable driver's seat	•	•	•	•	Roof Rails		•		•
					Premium Nappa Leather Interior		•		•					
					Leatherette	•		•						

* Specifications and features are subject to change.

SPECIFICATIONS

ENGINE				DIESEL 2.2 (e-XDi 220)			
DRIVEN WHEELS				SPORT 4WD XL	SPR 4WD XL	SPORT 4WD	SPR 4WD
TRANSMISSION				6AT	6AT	6AT	6AT
EMISSION				Euro 6			
EXTERIOR DIMENSION	Overall Length		mm	5,405		5,095	
	Overall width		mm	1,950		1,950	
	Overall height		mm	1,855		1,855	
	Tread	Front	mm	1,640		1,640	
		Rear	mm	1,640		1,640	
	Overhang	Front	mm	890		890	
		Rear	mm	1,105		1,105	
	Wheelbase		mm	3,210		3,100	
	Minimum clearance	Clear	mm	215			
Min turning radius		m	5.91				
WEIGHT	Gross vehicle weight		kg	2,880			
	Kerb weight		kg	2,090~2,192			
	Gross trailer weight	Braked	kg	3,500			
		Unbraked	kg	750			
ENGINE	Fuel		-	Diesel			
	Capacity		cc	2,157			
	Bore X Stroke		mm	86.2 X 92.4			
	Compression ratio		-	15.5 : 1			
	Number of cylinders		-	4 in-line			
PERFORMANCE	Max. power		kW/rpm	133.1 / 4,000			
			ps/rpm	181 / 4,000			
	Max. torque		Nm/rpm	420 / 1,400~2,800			
			kg.m/rpm	40.8 / 1,400~2,800			
FUEL CONSUMPTION	CO2 (combined)		g/km	226			
	Combined		L/100km	8.6			

* Specifications and features are subject to change.

- The fuel economy can vary according to road conditions or driver's habits.
- The above technical data can vary slightly by regional certification requirements or sales specifications.

DIMENSIONS

